



# 200W (1/3.7 HP)

**INDUCTION MOTORS** Frame size 90mm sq. (3.54 in. sq.)

Three-Phase

LEAD WIRE TYPE

## SPECIFICATIONS

CONTINUOUS DUTY, INSULATION CLASS A or E, 4POLES

Model	Output		Voltage (V)	Frequency (Hz)	Rated						Starting Torque			Capacitor ( $\mu$ F)
	(HP)	(W)			Input (W)	Current (A)	Torque			Speed (rpm)	(kg-cm)	(N-m)	(oz-in)	
							(kg-cm)	(N-m)	(oz-in)					
<b>L9I200□U</b>	1/3.7	200	3 $\varnothing$ 200	50	280	1.00	15	1.470	208.30	1300	31	3.038	430.50	-
					280	0.90	12.6	1.235	174.98	1550	24	2.352	333.29	
<b>L9I200□T</b>	1/3.7	200	3 $\varnothing$ 200~230	50	350	1.20	15	1.470	208.30	1300	40	3.920	555.48	-
					350	1.10	12.6	1.235	174.98	1550	30	2.940	416.61	
<b>L9I200□S</b>	1/3.7	200	3 $\varnothing$ 380~415	50	350	0.69	15	1.470	208.30	1300	40	3.920	555.48	-
					350	0.64	12.6	1.235	174.98	1550	30	2.940	416.61	
<b>L9I200□R</b>	1/3.7	200	3 $\varnothing$ 440	50	350	0.60	15	1.470	208.30	1300	40	3.920	555.48	-
					350	0.55	12.6	1.235	174.98	1550	30	2.940	416.61	

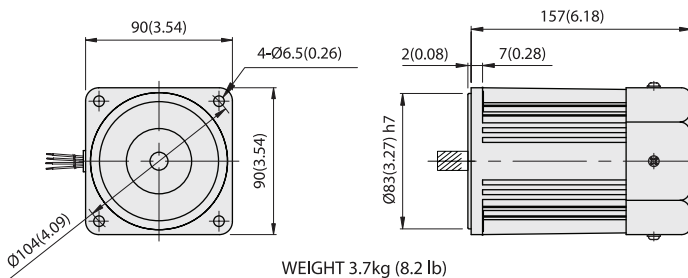
\* In case of some models certificated for export, the special cord like CE or UL is added after the existing model no. ex) L9I60□XH-CE, L9I60□EH-UL.  
 \* Insulation class for motors which acquired certificates for export is B.

INDUCTION MOTORS

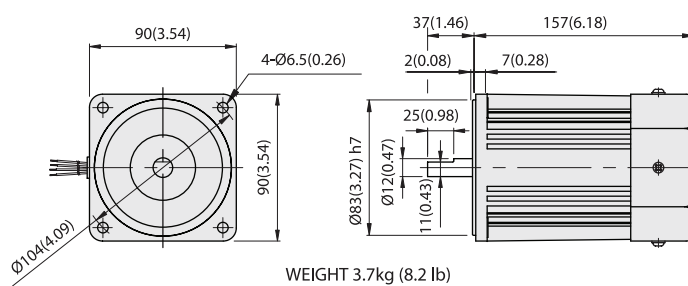
## DIMENSIONS

### L9I200P□H

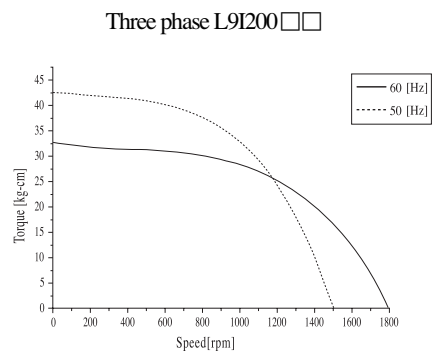
Unit : mm(inch)



### L9I200D□

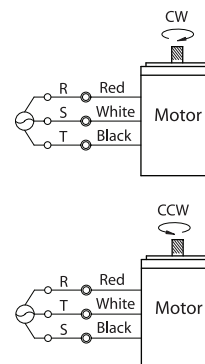


## SPEED-TORQUE CURVE



## CONNECTION DIAGRAMS

Standard or with T.P



The direction of rotation is seen from the end of motor shaft.